

STANDARD ARRIVAL
CHART - INSTRUMENT
(STAR) - ICAO

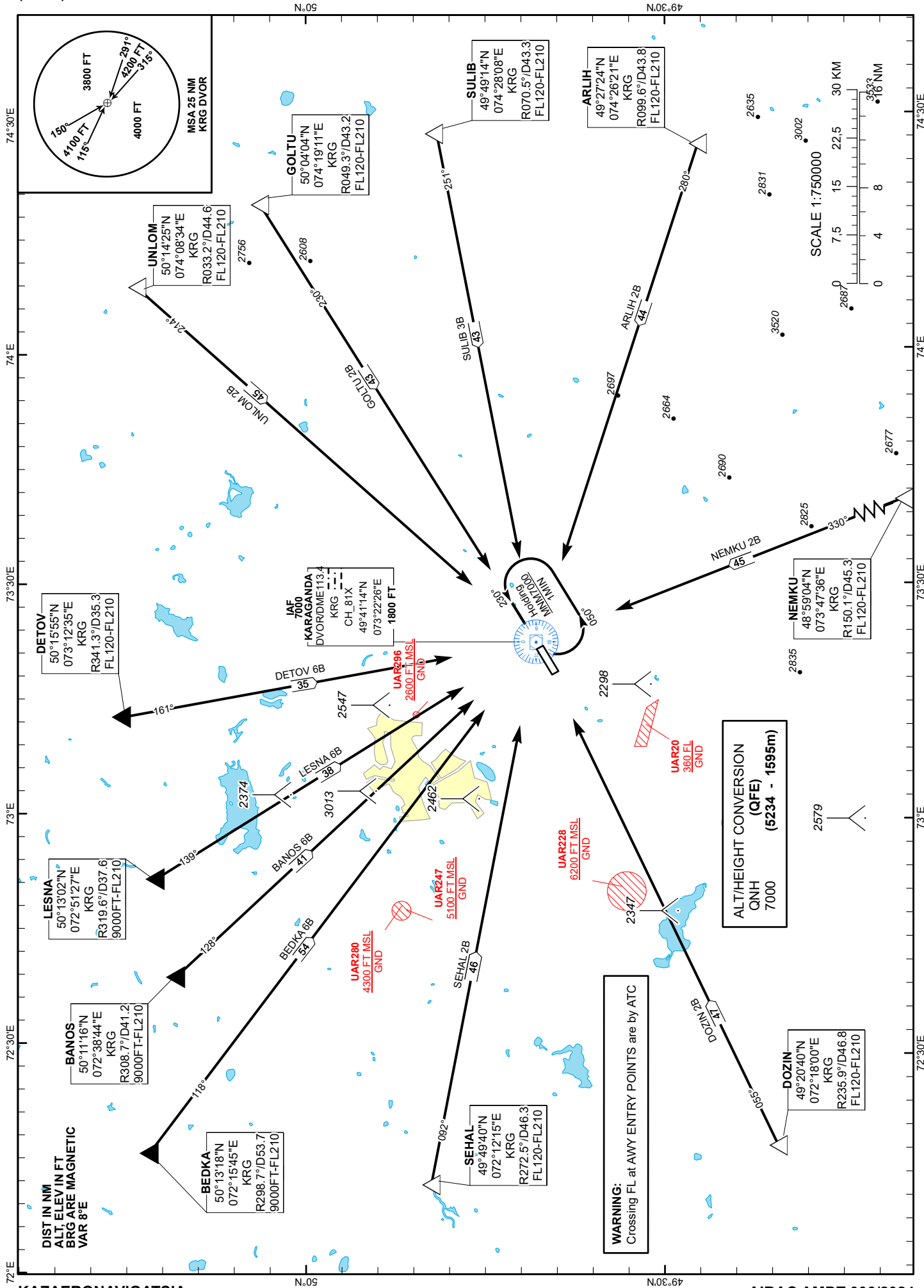
TRANSITION ALTITUDE
10000 FT

KARAGANDA TOWER 122.0
KARAGANDA ATIS (EN) 135.8
KARAGANDA ATIS (RU) 127.8

ARLIH 2B, BANOS 6B, BEDKA 6B,
DETOV 6B, DOZIN 2B, GOLTU 2B,
LESNA 6B, NEMKU 2B, SEHAL 2B,
SULIB 3B, UNLOM 2B.

KARAGANDA
RWY 05

CHANGE: GEDNO 5B excluded.



STANDARD ARRIVAL ROUTES – INSTRUMENT (STAR) KARAGANDA RWY 05
UNLOM 2B After crossing UNLOM (R033.2° D44.6 NM KRG), proceed on track 214° to DVOR/DME KRG. Cross UNLOM at FL120-FL210. Cross DVOR/DME KRG at 7000FT.
GOLTU 2B After crossing GOLTU (R049.3° D43.2 NM KRG), proceed on track 230° to DVOR/DME KRG. Cross GOLTU at FL120-FL210. Cross DVOR/DME KRG at 7000FT.
SULIB 3B After crossing SULIB (R070.5° D43.3 NM KRG), proceed on track 251° to DVOR/DME KRG. Cross SULIB at FL120-FL210. Cross DVOR/DME KRG at 7000FT.
ARLIH 2B After crossing ARLIH (R099.6° D43.8 NM KRG), proceed on track 280° to DVOR/DME KRG. Cross ARLIH at FL120-FL210. Cross DVOR/DME KRG at 7000FT.
NEMKU 2B After crossing NEMKU (R150.1° D45.3 NM KRG), proceed on track 330° to DVOR/DME KRG. Cross NEMKU at FL120-FL210. Cross DVOR/DME KRG at 7000FT.
DOZIN 2B After crossing DOZIN (R235.9° D46.8 NM KRG), proceed on track 055° to DVOR/DME KRG. Cross DOZIN at FL120-FL210. Cross DVOR/DME KRG at 7000FT.
SEHAL 2B After crossing SEHAL (R272.5° D46.3 NM KRG), proceed on track 092° to DVOR/DME KRG. Cross SEHAL at FL120-FL210. Cross DVOR/DME KRG at 7000FT.
BEDKA 6B After crossing BEDKA (R298.7° D53.7 NM KRG), proceed on track 118° to DVOR/DME KRG. Cross BEDKA at 9000FT-FL210. Cross DVOR/DME KRG at 7000FT.
BANOS 6B After crossing BANOS (R308.7° D41.2 NM KRG), proceed on track 128° to DVOR/DME KRG. Cross BANOS at 9000FT-FL210. Cross DVOR/DME KRG at 7000FT.
LESNA 6B After crossing LESNA (R319.6° D37.6 NM KRG), proceed on track 139° to DVOR/DME KRG. Cross LESNA at 9000FT-FL210. Cross DVOR/DME KRG at 7000FT.
DETOV 6B After crossing DETOV (R341.3° D35.3 NM KRG), proceed on track 161° to DVOR/DME KRG. Cross DETOV at FL120-FL210. Cross DVOR/DME KRG at 7000FT.